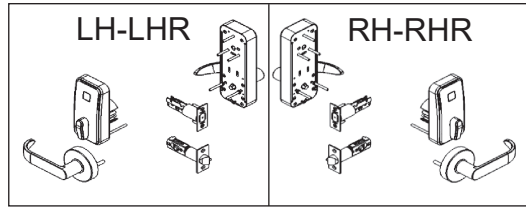


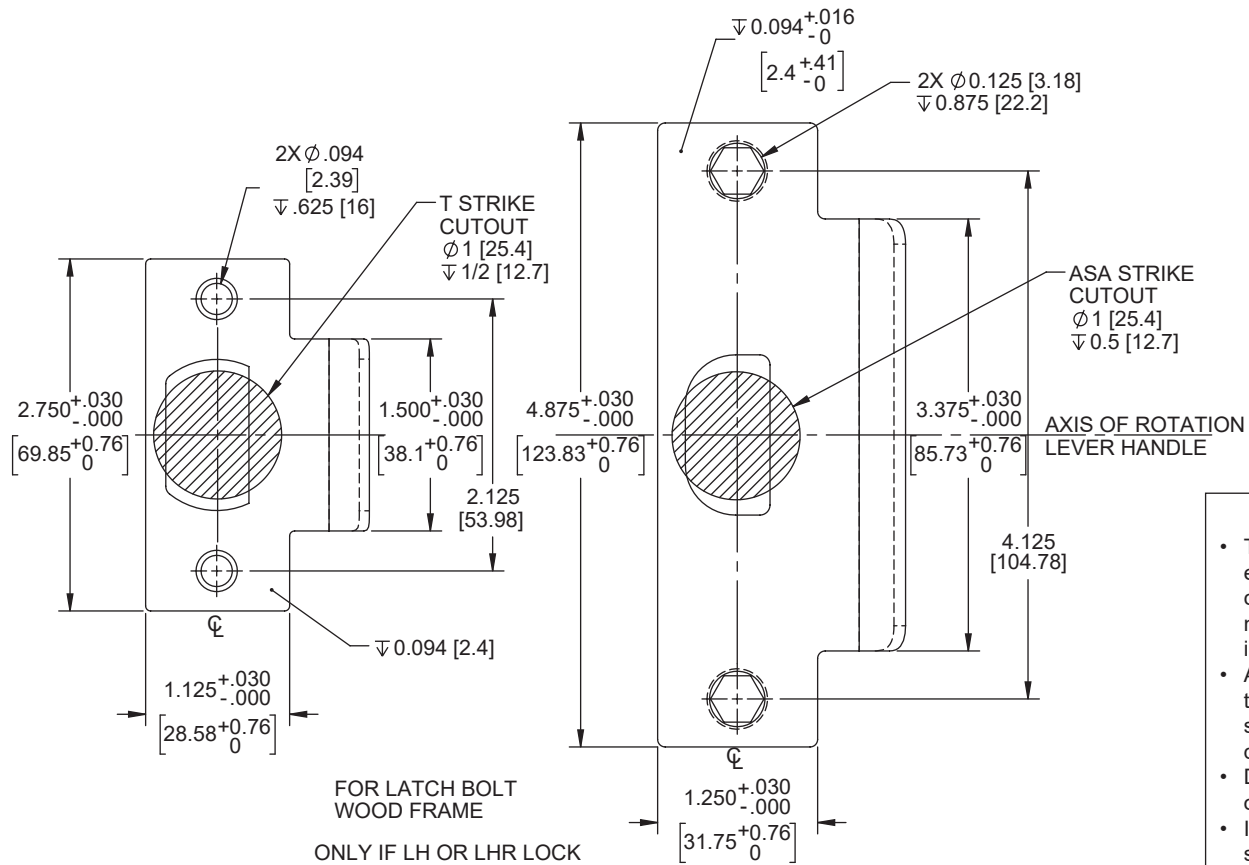
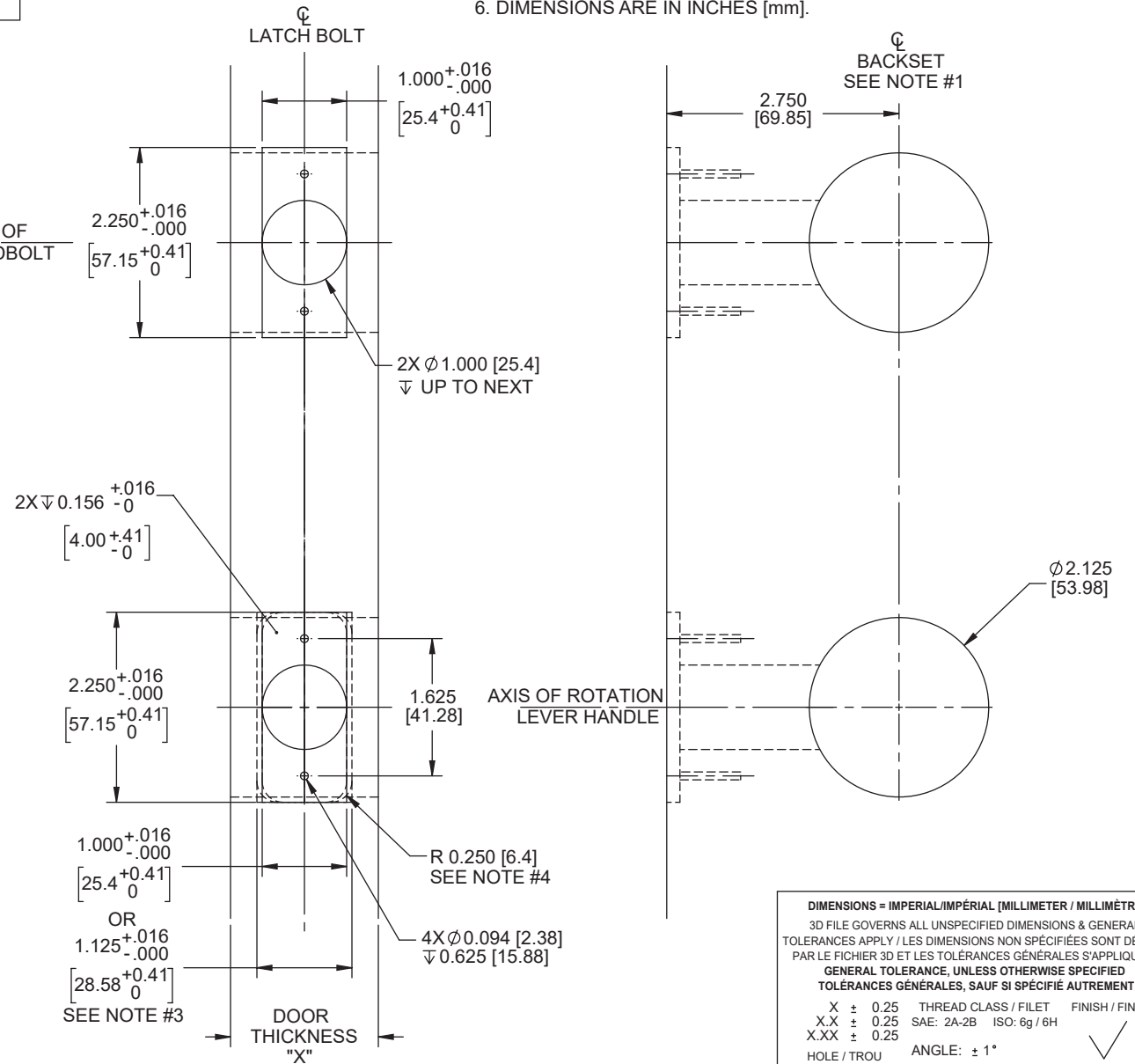
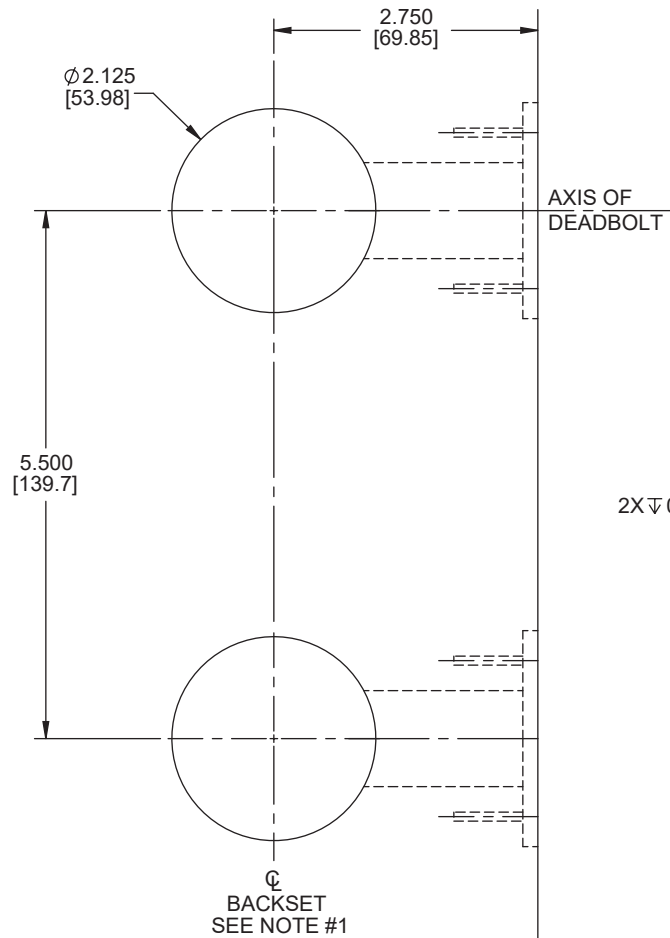
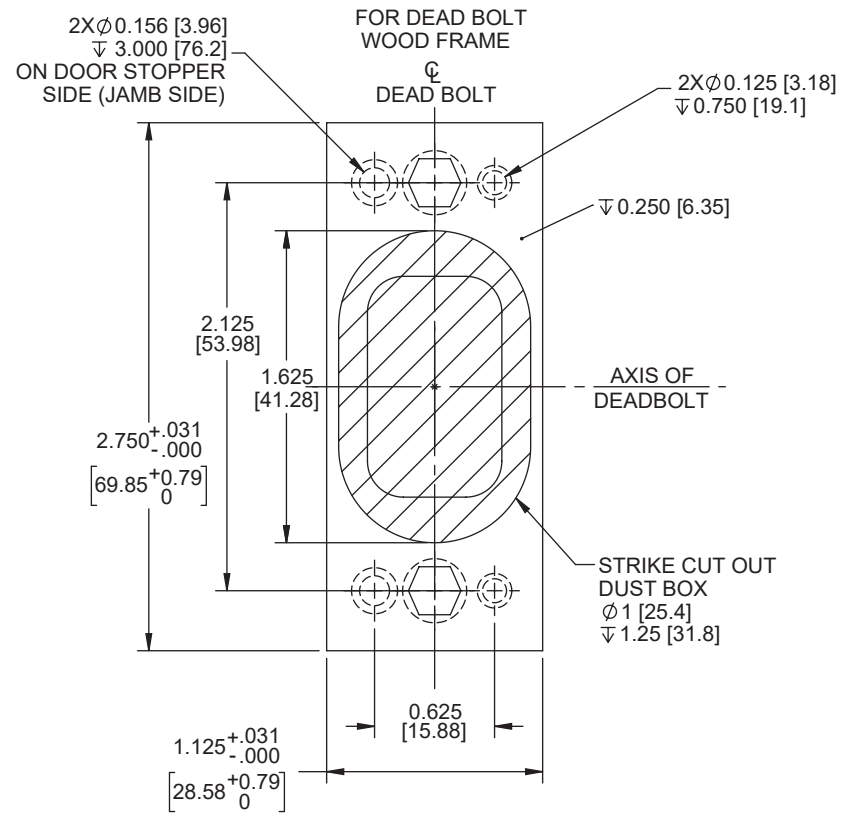
# Saffire LX-I & Saffire EVO LZ-I

2-3/4" Backset 5-1/2" door preparation



**NOTES:**

1. USE DIMENSIONS FROM TABLE BELOW TO ADJUST BACKSET POSITION ACCORDING TO LOW AND HIGH BEVEL DOOR EDGE.
2. DIMENSIONS ARE SYMMETRICAL ABOUT  $\phi$  UNLESS OTHERWISE NOTED.
3. DO THE CUT OUT ACCORDING TO SELECTED LATCH BOLT (1" OR 1-1/8").
4. IF THE SELECTED LATCH BOLT HAS RADIUS, MAKE CUT OUT WITH RADIUS.
5. DRAWING IS NOT TO SCALE.
6. DIMENSIONS ARE IN INCHES [mm].



**DIMENSIONS = IMPERIAL/IMPÉRIAL (MILLIMETER / MILLIMÈTRE)**  
 3D FILE GOVERNS ALL UNSPECIFIED DIMENSIONS & GENERAL TOLERANCES APPLY / LES DIMENSIONS NON SPÉCIFIÉES SONT DÉFINIES PAR LE FICHIER 3D ET LES TOLÉRANCES GÉNÉRALES S'APPLIQUENT GÉNÉRAL TOLERANCE, UNLESS OTHERWISE SPECIFIED / TOLÉRANCES GÉNÉRALES, SAUF SI SPÉCIFIÉ AUTREMENT

X ± 0.25 THREAD CLASS / FILET FINISH / FINI  
 X.X ± 0.25 SAE: 2A-2B ISO: 6g/6H  
 X.XX ± 0.25

HOLE / TROU ANGLE: ± 1°  
 Ø: +.13/-0.05 CHAMFER / CHANFREIN: ≤ 5°

**AS PER / SELON : ASME Y14.5M-2009**

**WARNING**

- To verify lock coverage and door operation meets expectations, dormakaba strongly recommends completing a full door mockup. This will ensure that all necessary products and parts for a successful installation are included.
- Always validate that you have selected the correct template for specific lock model being installed. The same lock model can be offered with different locking device options.
- Drawing is not to scale. Measurements are for reference only. Not a drilling template.
- If you have any questions, please contact your local sales representative or authorized reseller.

**BACKSET ADJUSTMENT FOR 3° BEVEL DOOR**

DOOR THICKNESS DIMENSION X	BACKSET ADJUSTMENT DIMENSION Y
1.25 [31.8]	0.032 [0.81]
1.50 [38.1]	0.039 [1.00]
1.75 [44.5]	0.046 [1.17]
2.00 [50.8]	0.052 [1.32]
2.25 [57.2]	0.059 [1.50]
2.50 [63.5]	0.065 [1.65]
2.75 [69.9]	0.072 [1.83]